

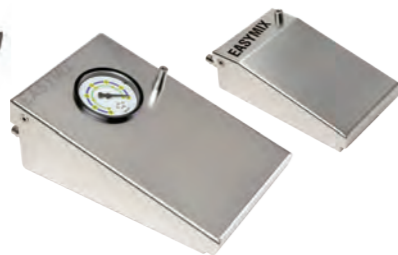
EASYMIX® single-use, sterile articles

| | Quantity | Art.-No. |
|--|----------|----------|
| EASYMIX® pro single mixing system (incl. nozzle \varnothing 11 mm, length 195 mm) | 1 | 02-0305 |
| Nozzle slim (\varnothing 8 mm, length 160 mm) | 1 | 02-0104 |
| Nozzle revision (\varnothing 13 mm, length 270 mm) | 1 | 02-0105 |



EASYMIX® reusable accessories

| | | |
|---|---|------------|
| EASYMIX® cement injector | 1 | 02-0504-04 |
| EASYMIX® vacuum pump I | 1 | 02-0401 |
| EASYMIX® vacuum pump II with indicator | 1 | 02-0201 |
| Hose for vacuum pump 5 m, wall connection Medap | 1 | 02-0205 |
| Hose for vacuum pump 5 m, wall connection Dräger | 1 | 02-0206 |
| Hose for vacuum pump 5 m, without wall connection | 1 | 02-0202 |



References

- [1] Walenkamp, G.H. and Murray, D.W. (2001) **Bone Cements and Cementing Technique**, Springer Verlag, Heidelberg.
- [2] Horas, U., Seidel, P. and Heiss, C. (2002) **Vakuummischsysteme zur Knochenzementfertigstellung: ein Vergleich unterschiedlicher Systeme**. Zeitschrift für Orthopädie und ihre Grenzgebiete, 140, 603-610.



OSARTIS GmbH

Auf der Beune 101, 64839 Münster, Germany
 Subsidiary: Lagerstraße 11-15, 64807 Dieburg, Germany
 phone +49 (0) 6071 - 929 0 e-mail info@osartis.de
 fax +49 (0) 6071 - 929 100 web www.osartis.de

141-2310-01EN / 032021

EASYMIX® pro

Sterile disposable vacuum mixing system with reusable accessories



EASYMIX® pro

EASYMIX® pro mixing system is a sterile disposable vacuum mixing system for mixing PMMA bone cements safely. The vacuum mixing technique reduces the porosity of the cement. Reduced porosity leads to an increase in the strength of the cement.

The EASYMIX® pro vacuum mixing system is intended for mixing and application of PMMA bone cements which are allowed for use with a vacuum mixing system.

Product Design

The innovative closing mechanism of EASYMIX® pro ensures optimal and easy handling without compromising the mixing result.

- The closure with fixation ring does not have to be put on in a specific positioning and can be locked with low force.
- After the mixing process the mixing rod is broken off and the cement application can begin immediately.

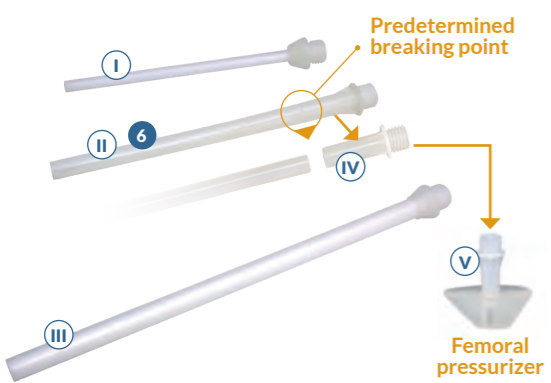
Components

The EASYMIX® system consists of the EASYMIX® vacuum pump, the EASYMIX® cement injector and the EASYMIX® pro cartridge set (single-use). The pumps and the cement injectors are reusable.

EASYMIX® pro

The set is composed of:

- 1 Mixing cartridge (suitable for 40 to 80 g cement powder) incl. cartridge base
- 2 Funnel
- 3 Closure consisting of plunger with fixation ring and mixing rod
- 4 Femoral pressurizer
- 5 Tubing to connect to the vacuum pump
- 6 Nozzle (ø 11 mm, length 195 mm)
- 7 Mixing instructions
- 8 All sterile packed in a blister and a breatherbag

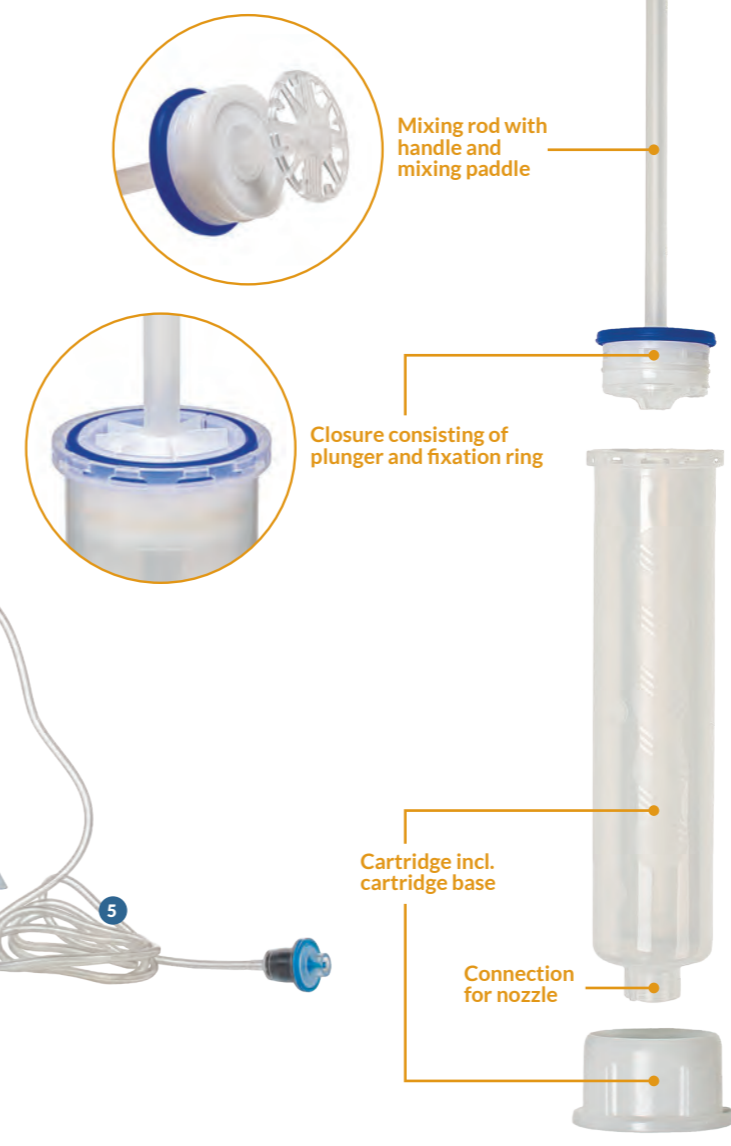


Accessories: Additional Nozzles

- I Nozzle slim (ø 8 mm, length 160 mm)
- II Nozzle (ø 11 mm, length 195 mm - included in set)
- III Nozzle revision (ø 13 mm, length 270 mm)
- IV Shortened nozzle for knee TEP (ø 11 mm, length 40 mm - included in set)
- V Shortened nozzle for pressurization at the proximal femur in combination with femoral pressurizer (included in set)

Optimal Mixing Results

Mixing with the EASYMIX® pro vacuum mixing system generates a homogenous mixed cement dough and reduces the porosity of the cement. Studies indicate that reduced cement porosity lowers the risk of subsequent revisions resulting from aseptic loosening.^{1) 2)}



Reliable Cementing Result

The reduced porosity of the cement leads to an increase of the fatigue and bending strength of the cement. Vacuum mixing with the EASYMIX® pro mixing system makes retrograde filling possible, improves the cementing result and the stability of the connection of prosthesis and host bone.²⁾

Easy to Handle

EASYMIX® pro is easy to handle. Just a few safe steps provide excellent mixing results. The use of EASYMIX® pro in combination with PMMA bone cements relies on established procedures in the operating room and on well-known and safe processes of mixing and application.

Properties

- Reliable vacuum mixing system for PMMA bone cements
- Fast set-up and easy to use
- Convenient handling of the mixing system
- Reliable vacuum level throughout the entire mixing process
- Convenient mixing of the cement
- Effective mixing of cement components
- Reduced porosity
- Increased fatigue strength of the bone cement
- Reduced emission of monomer fumes
- Latex free
- Break-away cement nozzle, offering two nozzle lengths in one design

EASYMIX® Instruments

- A Cement injector
- B Vacuum pump (2 different types available)
- C Compressed air hose (3 different types available)

